A rustic studio with stone walls, wooden beams, and tables set up for an art course. The room features a high ceiling with exposed wooden rafters and a large wooden pillar. Several tables are arranged, some with white cloths and art supplies. A large window on the right side provides natural light. The overall atmosphere is warm and creative.

LANDSCAPE INTO PAINT AND
PRINT

10 DAY COURSE IN THE SOUTH
OF FRANCE

LIZ HOUGH &
VICTORIA ARNEY

APRIL 16 - 27 2018

ACCOMMODATION and TUITION
Dinner, bed & breakfast

Liz Hough and Victoria Arney will each bring a different approach to responding and thinking about the landscape. The course will be a balance between printing, drawing and painting days. You will be encouraged to explore your ideas in print and paint in an informal and supportive creative atmosphere.

Liz Hough studied BA Hons in Painting at Manchester, then onto the Royal Academy Schools, graduating in 1991.



Her practice involves use of collage, paint and a mixed media approach to capture the essence of landscape through experimental drawing and colour.

Prizes and awards include : Landseer Scholarship for Compositional Studies in Oils; Creswick Prize for Landscape Painting and Daler-Rowney Prize at RA Summer Exhibition.

She lives, paints and teaches in St Ives, Cornwall.

Victoria Arney is a painter and printmaker. She studied painting at the Slade and then took an MA in printmaking in 2010 at Camberwell.



Since then she has concentrated on contemporary prints about nature and large format drawings and installations on paper.

Specialising in etching, woodcut, lino-cut and Chin Colle. Victoria has won awards for her prints - including the Triennale of Contemporary engravers Barcelona in 2016 and Bite - contemporary print (Mall galleries) in 2011.

She lives, works and teaches in France.

JUNAS & CHAPEAU DE PAILLE STUDIOS

You will be staying in the village of Junas in the Launguedoc Roussillion region of Southern France. The village is set in the evergreen Garrigue forests, surrounded by vines and olive groves, a short cycle ride away from the medieval city of Sommieres and just 30 minutes drive from Montpellier and Nimes.

Our large farmhouse was converted in 2016 and is situated on the edge of the village. There are three apartments, each with separate bedrooms, kitchens and private terraces; a beautiful garden for you to relax in and an 8 x 4 metre salt-water swimming pool for your enjoyment.

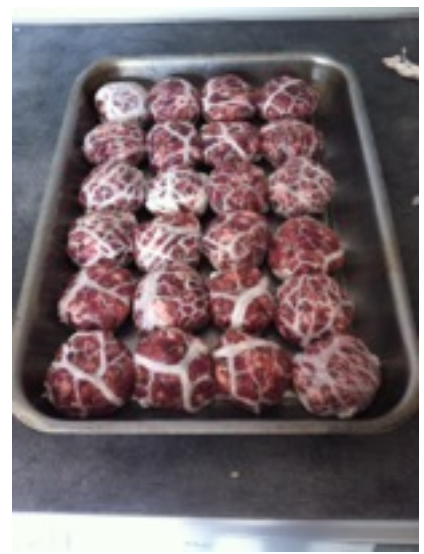
The bright and airy Print Studio is set in the garden and has a new press with a 120 cm x 62 cm bed. The stunning Terrace Studio on the first floor of the Bergerie looks out across the village and provides space and tranquility to enjoy the surroundings. We also have a good art library here to inspire you.

The course's aim is to bring together landscape painting and printing in a beautiful location combined with wonderful cooking. No experience is necessary !



Fergus Clague London chef for 21 years and husband of Victoria, came to this region inspired by the produce, the wine makers, the artisans and the mix of cultures.

The menu at Chapeau de Paille changes daily - menus consider the seasons, your needs and the weather. We eat meat and fish and always lots of vegetables, salad and fruit . Coffee, tea and cake rituals are important here - you need energy for your graft in the studio so there will be plenty of home made biscuits and cake and a chance for partners to help in the kitchen.



The languedoc Roussillon is known as the New World of French wine. You will find grand Grenache, Syrah and Viognier from huge and long established wineries as well as ancient varieties like Aramon, Oiellade and Rolle from smaller domaines working organically or biodynamically.

Dates 16th April Monday - 27 th April Friday 2018

Paint and print course - half board with tuition and materials €1450

Paint and Print Course - What's included :

- Transport to and from either Montpellier or Nimes Airport.
- 7 days tuition in the print/paint studio
- **Visits – 1 full day at Arles** - visiting and drawing places in the footsteps of Van Gogh with lots of interesting museums (van Gogh foundation and Luma) Roman amphitheatre, Lunch out (not paid for) but evening meal on return provided. Drive back through the Carmargues.

Market day - 1/2 day - morning visit to Sommieres transport included

Drawing in the vines - 1/2 day A picnic lunch in Puech Coukoo vineyard with Pic Saint Loup and the Cevennes mountains in the background.

- Basic painting and print materials - drawing pencils and charcoal, paint, paper, brushes, boards and easels, starter zinc and copper plates, inks, proofing paper.
- Accommodation half board in 3 apartments
- Breakfasts served communally in the garden or on our Terrace studio with home made jams and organic Guatemalan coffee. Lunches on studio days and evening meals on other days.

People are advised to bring along sketch books and favourite drawing materials and brushes if required to supplement our basics.

Partners Escapes - *Bring along your partner and they can stay for half price 750 EUROS for 10 days (in double rooms only) individual car hire is advised.*

Extras

As well as having a chance to explore the area locally and relax, your partner can also book to join Ferg on 1/2 day culinary adventures.

Early morning market and cookery lesson

Meet our heroic local vigneron with tasting in the cave

Making charcuterie and Merguez sausages

Chapeau de Paille wine tastings





Print studio and Terrace studio



Where to Find us

By air : British Airways & EasyJet to Montpellier; RyanAir to Nimes.

<https://www.google.fr/maps/place/30250+Junas/@43.7589002,4.0853945,13z/data=!3m1!4b1!4m5!3m4!1s0x12b421034972a593:0x4078821166b4050!8m2!3d43.77049!4d4.122239>

CONTACT : VICKY Mobile : 00 33 (0)781 521486 or
FERGUS- Mobile : 00 33 (0)652779486

victoria.arney@gmail.com
pressinthevines.com
victoriaarney.com



